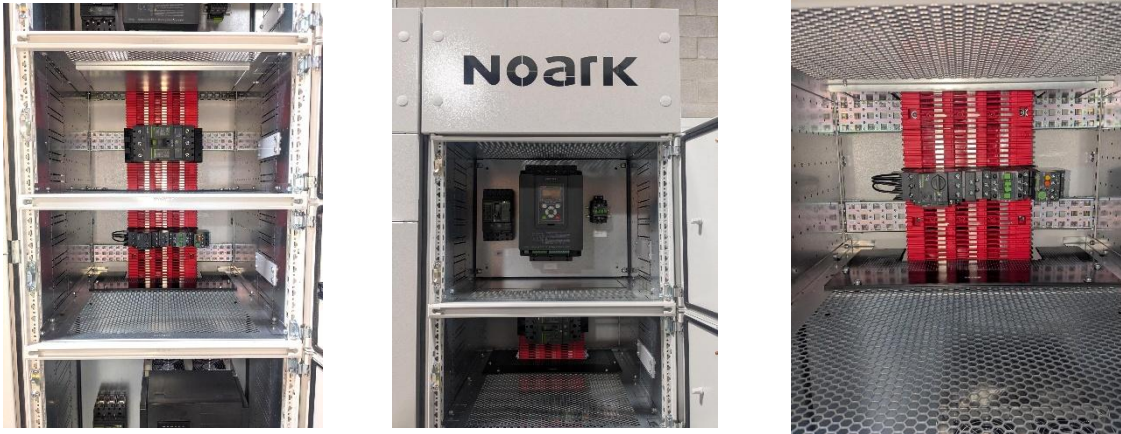


## NOARK M-Series MCCBs Deliver Seamless Integration with Rittal RiLineX Busbar Systems

*High-performance molded case circuit breakers engineered for fast installation, flexible design, and reliable power distribution*



June 3, 2026. Addison, TX. Kitchener, ON. [NOARK Electric](#) announces the compatibility of its [M-Series molded case circuit breakers \(MCCBs\)](#) with [Rittal's RiLineX 60 mm busbar system](#) through specialized component adapters designed for modern panel-building applications. The integration combines NOARK's high-performance circuit protection technology with RiLineX's innovative "Easy-Fix" mounting platform to deliver faster assembly, enhanced flexibility, and simplified system design for panel builders and OEMs.

NOARK's M1, M2, and M3 MCCBs are fully supported within the RiLineX ecosystem, enabling streamlined installation and optimized power distribution configurations across industrial and commercial applications.



### RITTAL-NOARK Collaborate on ICP Showcase

Fully built at NOARK's Ontario Warehouse with joint Rittal & NOARK expertise, NOARK is showcasing our Power Distribution and Industrial Control Panel capability using our UL tested and approved components at the [Global Energy Show, \(GES\) 2026](#) - NOARK booth 2705. The panel demonstrates our Industrial Control Panel UL508A and switchboard capability using standard enclosures, busbar systems ([Rittal RlineX](#)) together with circuit protection devices - air circuit breaker and molded case circuit breakers.

The panel also shows our integrated control systems with VFDs, soft starters, manual motor starters and signaling devices.

“Today’s panel builders require solutions that reduce installation time while maintaining the highest standards of performance and reliability,” said Patrick Woodham, GM, NOARK Electric USA & Canada. “The combination of NOARK M-Series MCCBs and the RiLineX busbar system delivers a highly efficient, flexible, and scalable solution for modern power distribution systems.”

The RiLineX CB component adapters feature adjustable mounting points and semi-automated busbar height adjustment, enabling quick snap-on installation with minimal tools. The system supports up to 400 A total capacity and voltage ratings up to 690 V AC (IEC) / 600 V AC (UL), providing flexibility for a broad range of applications.

NOARK’s M-Series MCCBs are engineered for demanding industrial and commercial environments and offer scalable protection across a wide current range:

- M1 breakers: up to 150 A
- M2 breakers: up to 250 A
- M3 breakers: up to 400 A

The M-Series combines compact, space-saving construction with high interrupting capacity and flexible protection options, including thermal-magnetic and electronic trip units. Certified to UL, CSA, and IEC standards, the breakers are designed for global applications and backed by NOARK’s industry-leading five-year limited warranty.

#### **Key Benefits for Panel Builders and OEMs**

- Fast, tool-free “click and work” installation
- Reduced engineering and assembly time
- Compact design optimized for high-density assemblies
- Flexible top or bottom cable entry configurations
- Enhanced safety with full touch protection up to IP3X
- Reduced total cost of ownership through faster installation and long-term reliability

The combined NOARK and RiLineX solution is ideal for:

- Industrial control panels
- Commercial power distribution systems
- OEM equipment manufacturing

- Data centers and critical infrastructure applications

For optimal performance and mounting compatibility, NOARK recommends verifying specific breaker models with corresponding RiLineX CB component adapter specifications.

## **About NOARK Electric**

NOARK Electric is a global manufacturer and supplier of low, medium, and high voltage electrical components for industrial and commercial applications. NOARK specializes in providing electrical circuit protection and motor control solutions for OEMs, contractors, and distributors.

NOARK's mission is to provide customers with the highest quality products at exceptional value, backed by world-class service and support. Every NOARK product is tested and certified to the highest industry standards and covered by an exclusive one- or five-year limited warranty.

NOARK Electric is a wholly owned subsidiary of the CHINT Group, a leading global smart energy solutions provider with more than 50,000 employees in over 140 countries, annual revenue exceeding USD \$22 billion, and R&D centers in Los Angeles, Shanghai, and Prague.

For more information, visit:

[NOARK Electric North America](#)

## **Key Contacts**

### **United States**

Rittal: [customerservice@rittal.us](mailto:customerservice@rittal.us)

NOARK Electric: [nasales@noark-electric.com](mailto:nasales@noark-electric.com)

### **Canada**

Rittal: [sales-support@rittal.ca](mailto:sales-support@rittal.ca)

NOARK Electric: [casales@noark-electric.com](mailto:casales@noark-electric.com)

NOARK Electric Media Contact (USA & Canada):

[Sandra.abuwalla@noark-electric.com](mailto:Sandra.abuwalla@noark-electric.com)